



## Contents

**Data Consultancy**

**Data Migration**

**Data Masking**

**Data Transformation**

**Data Matching**



**LET US BE YOUR  
DATA  
TRANSFORMATION  
PARTNER**



**From delivering complex data migrations to implementing complete MDM solutions for businesses struggling with siloes and fragmentation, Sentinel understands data management challenges and how to overcome them.**

## **Above All, We Know How To Listen**

Our team of data consultants, business analysts and developers have years of experience delivering quality solutions that meet a diverse range of needs. We understand the importance of working collaboratively to find the most effective solution for you.

## **Data Consultancy**

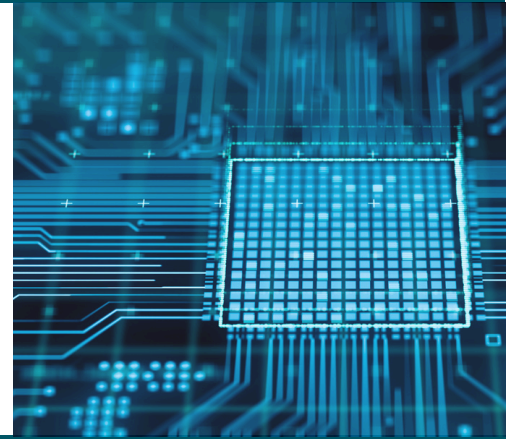
Our aim is to transform the role data plays in your business. It should be a highly valuable corporate asset – giving you the control, insight, and the agility to grow.

Our experienced consultants, analysts and developers have decades of experience in delivering solutions that meet a diverse range of needs. Our senior leaders have worked across multiple blue-chip organisations such as **PWC, Microsoft, Goldman Sachs and Accenture**. Our product leads and developers bring experience from diverse fields including computer science, database administration, software engineering, marketing and sales. We also have consultants with academic backgrounds in machine learning and data science.

**Areas of specialisation include finance, insurance and supply chain as well as public sector verticals including local government, housing associations and charities.**

## Data Migration

Our skilled team of consultants are here to help drive your migration forward. We will help you manage the scope, quality, and delivery of data to support your transformation project goals and ensure everything runs smoothly using our fully configurable platform.



## Key Features:

- Easily configured to extract data from all structured database types.
- Ensures safe and compliant use of data for testing.
- Data staging and cleansing of data from legacy systems.
- Safe and compliant use of data for testing. Sentinel technology has been developed using the ICO's 'data protection by design' approach.



## Data Masking

Our consultants will help you understand your options, they can quickly and confidently assess whether your data project can use scrambled or masked data or if some elements of personal data will be required for solution testing.

## Key Features:

- Comprehensive data consultancy for IT projects that require safe and compliant use of personal data in project testing phases.
- Safe use of personal data. Where real data is required, Sentinel will create the appropriate processes and test systems to protect it.
- Apply Sentinel's Data Masking capability to anonymise personal data, regardless of the system or database.
- Mask data in a consistent way across source systems to provide an integrated test landscape.

Sentinel's Data Masking (sometimes known as scrambling or obfuscation) service provides a fast, flexible and efficient means of obfuscating large amounts of personal data in an integrated way across a variety of test systems. Using our Data Masking capability, Sentinel can enable risk-free applications of personal data in testing across multiple systems, allowing UAT to progress with safe, realistic and compliant data. Individual records become anonymous so the original person cannot be identified.

## Business Data Transformation

Data is often held on disparate and fragmented systems. Poorly integrated business data can affect the day to day working of an organisation profoundly, impacting efficiency and progress. Our consultants help you move from a legacy business data environment to a new integrated model. We provide advice and support through every stage, from assessing the current data landscape through to business object and process focused discovery. We then deliver via our data management platform.

### Key features:

- Create an integrated and accurate single version of the truth spanning maintenance, customer relationship management (CRM) databases, and asset single view records - and beyond.
- Improve data quality in advance of a migration.
- Mask, scramble, or create synthetic records to support UAT and GDPR.
- Make data ready for moves to a platform like Microsoft Azure.

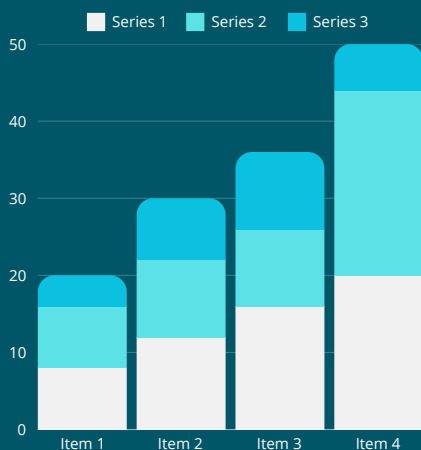
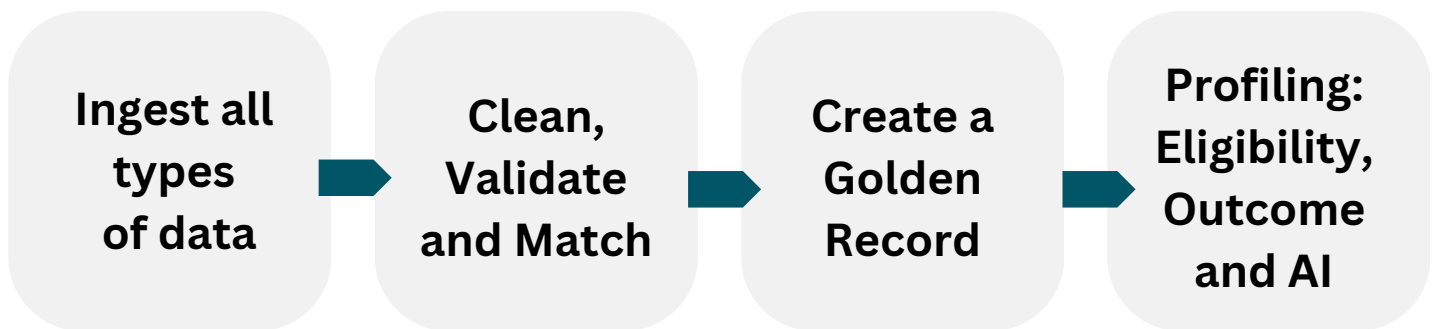




## What Is Data Matching?

Data matching is the process of comparing different sets of data and matching them against each other. The purpose is to find the data that refers to the same subject (person or asset).

Matching several different records about the same subject is an important step in creating a 'Golden Record', the most accurate and complete record of an individual, customer, property or asset.



## Create Insights

